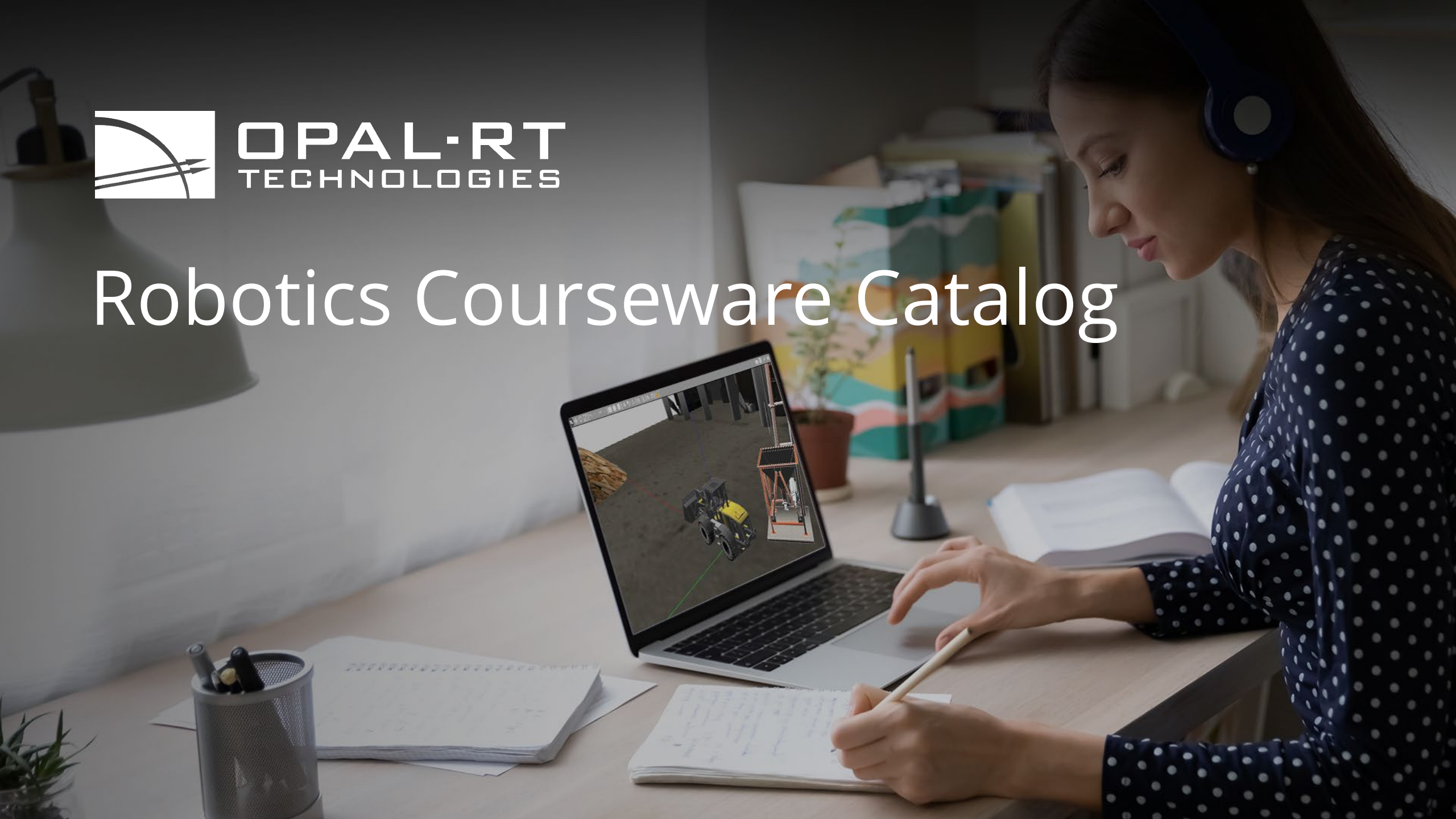




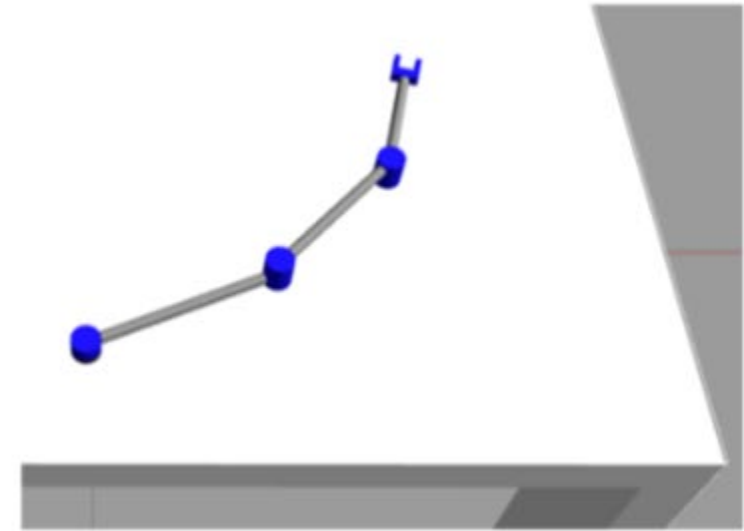
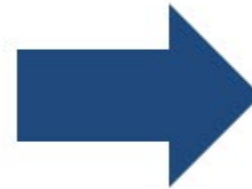
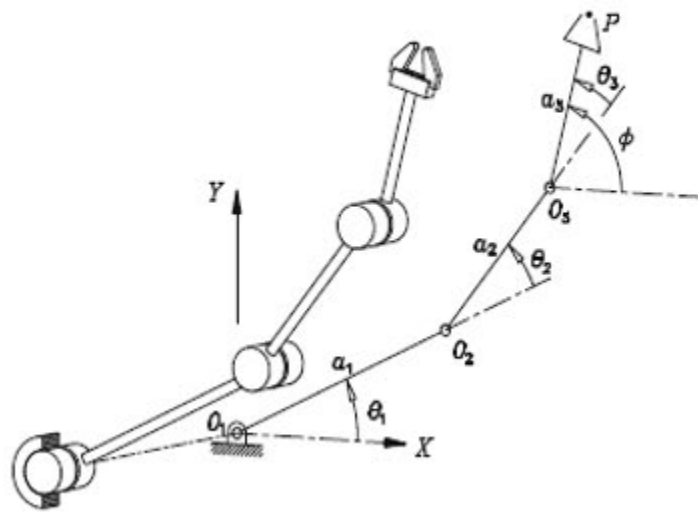
OPAL-RT
TECHNOLOGIES

Robotics Courseware Catalog



- Serial Robotics Manipulators
- Wheeled Mobile Robots
- Autonomous Off-Road Vehicles

| Topic | Suggested Lab Sessions |
|---------------------|---|
| 3-dof Planar Robot | DH-table & Homogeneous transformations |
| | Direct & Inverse Displacement Analysis |
| | Decoupled architecture (two positioning + one orientation) |
| | Kinetostatics & Jacobian analysis |
| | Position & speed joints control |
| | Trajectory generation with polynomial interpolation |
| | End-effector (EE) control for pick-and-place operation |
| FANUC LRMate 200 iC | Same items as above |
| | 6-dof spatial robot: 3D Rotation & Quaternion |
| | Decoupled architecture (three positioning + three orientation) |
| | Dynamics & gravity impact |
| | Joints & EE control (with gravity) |
| UR10e | Same items as above except with non-decoupled architecture |
| | EE Force-based control |



Courtesy of Prof. J. Angeles
Fundamental of Robotics Mechanical Systems

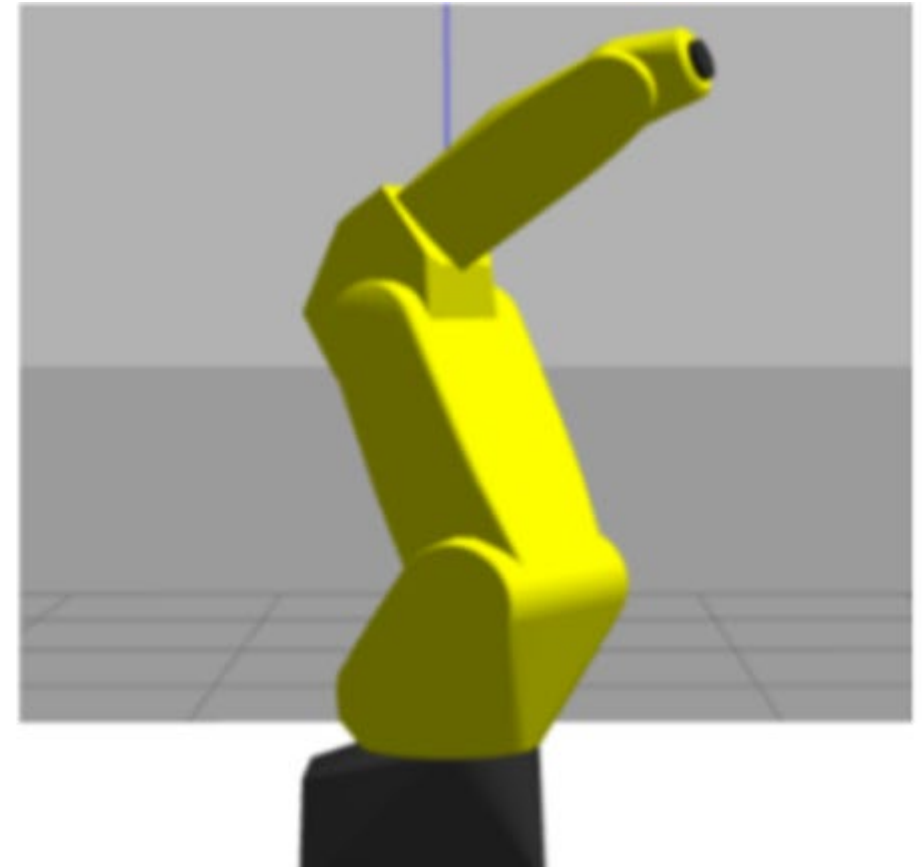
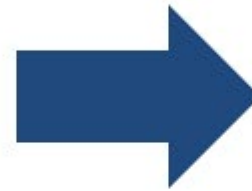
SERIAL ROBOTICS MANIPULATORS

Serial Robotics Manipulators
Wheeled Mobile Robots
Autonomous Off-Road Vehicles

3dof Planar Robot
FANUC LR Mate 200 iC
UR10e



Courtesy of FANUC



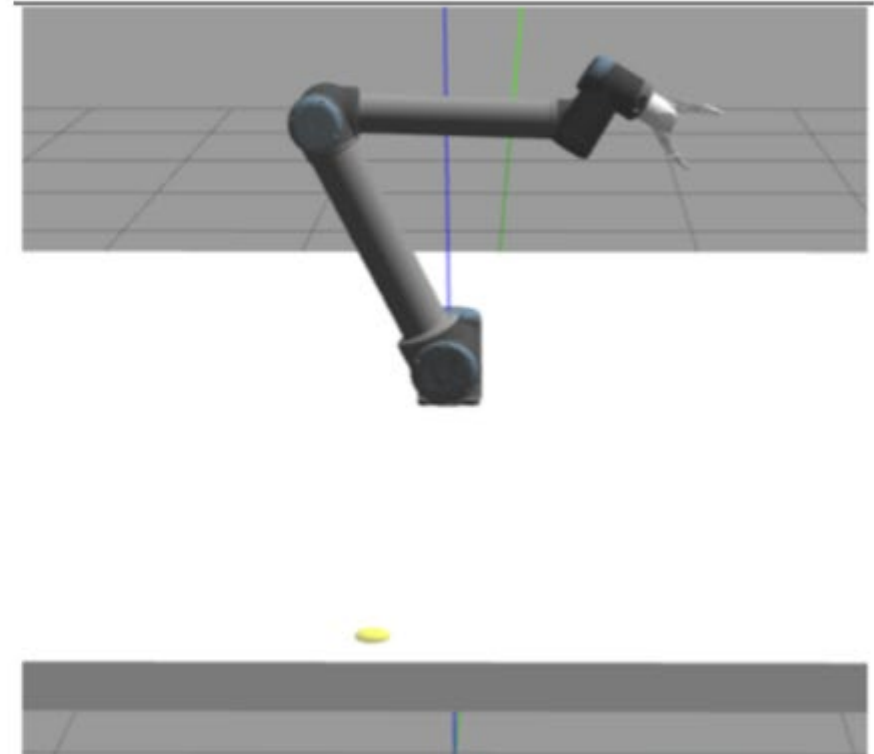
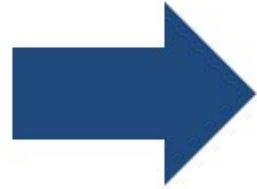
SERIAL ROBOTICS MANIPULATORS

Serial Robotics Manipulators
Wheeled Mobile Robots
Autonomous Off-Road Vehicles

3dof Planar Robot
FANUC LR Mate 200 iC
UR10e



Courtesy of UR10e

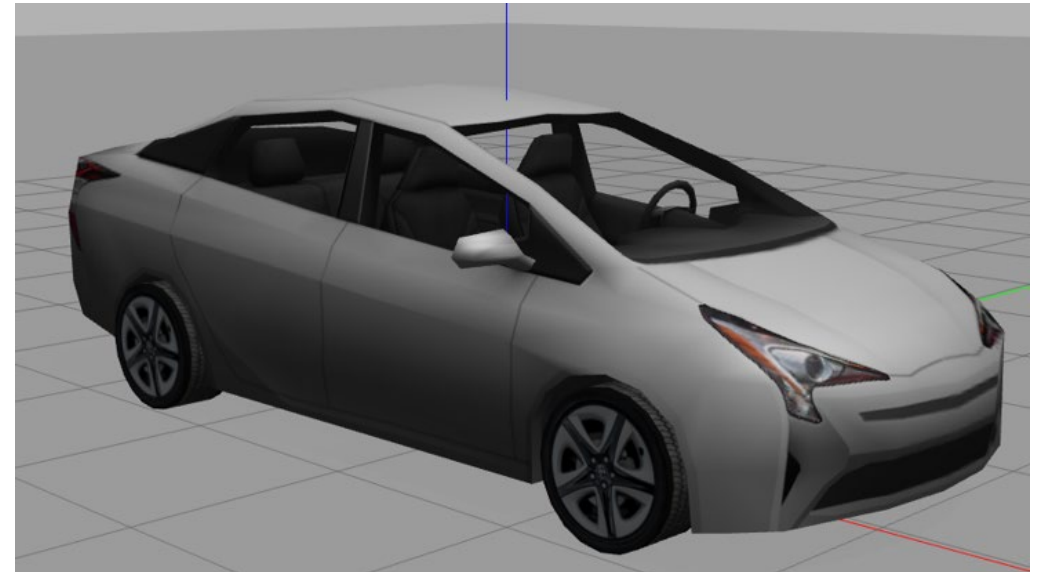


| Topic | Suggested Lab Sessions |
|----------------------------|--|
| Ackermann-based steering | Nonholonomic constraints & Kinematics model |
| | Dynamics model in Gazebo |
| | Nonlinear change of coordinates: One-chained system form |
| | Trajectory generation for point-to-point motion |
| | Navigation & Control |
| Articulated-based steering | Nonholonomic constraints & Kinematics |
| | Dynamics model in Gazebo |
| | Navigation & Control |
| Differential Drive Robot | Same items as above |
| | Lyapunov function for navigation with sliding mode control |
| Mobile Wheeled Pendulum | Same items as DDR |
| | Input-Output Linearization & Unstable zero-dynamics |

WHEELED MOBILE ROBOTS

Serial Robotics Manipulators
Wheeled Mobile Robots
Autonomous Off-Road Vehicles

Ackermann-based steering
Articulated-based steering
Differential Drive robot
Mobile wheeled Pendulum

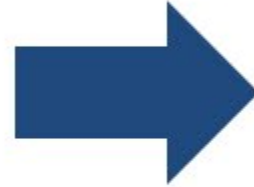


Courtesy of TOYOTA

WHEELED MOBILE ROBOTS

Serial Robotics Manipulators
Wheeled Mobile Robots
Autonomous Off-Road Vehicles

Ackermann-based steering
Articulated-based steering
Differential Drive robot
Mobile wheeled Pendulum

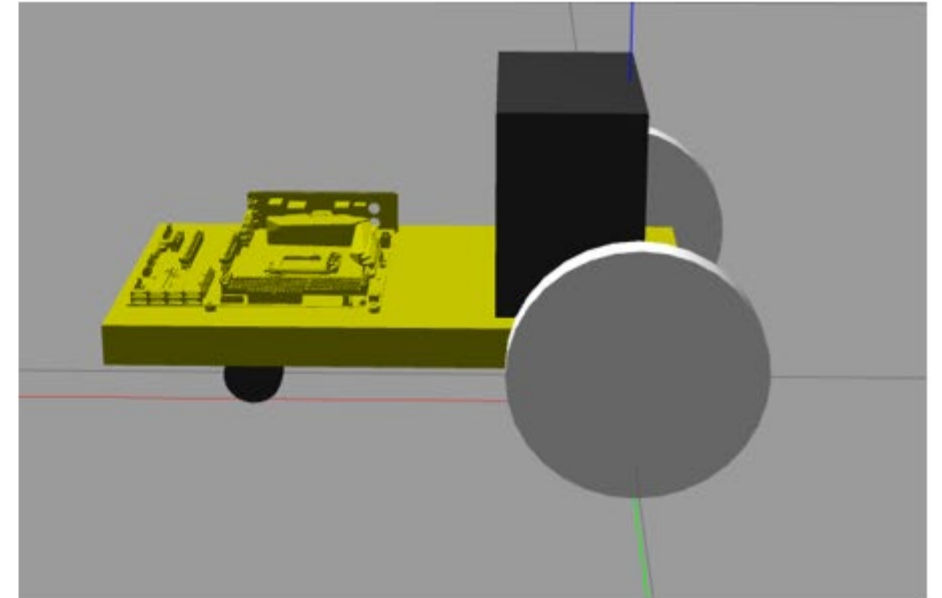
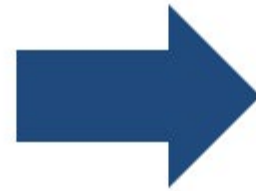
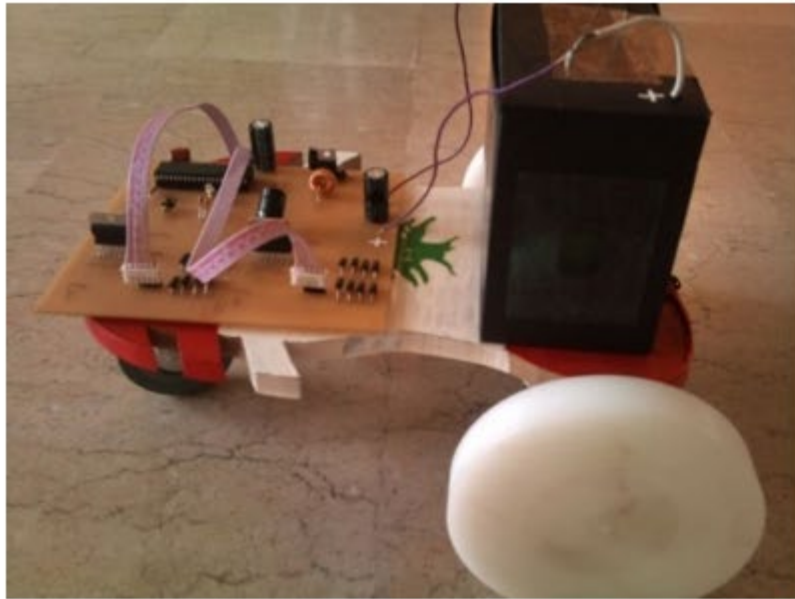


Courtesy of VOLVO

WHEELED MOBILE ROBOTS

Serial Robotics Manipulators
Wheeled Mobile Robots
Autonomous Off-Road Vehicles

Ackermann-based steering
Articulated-based steering
Differential Drive robot
Mobile wheeled Pendulum

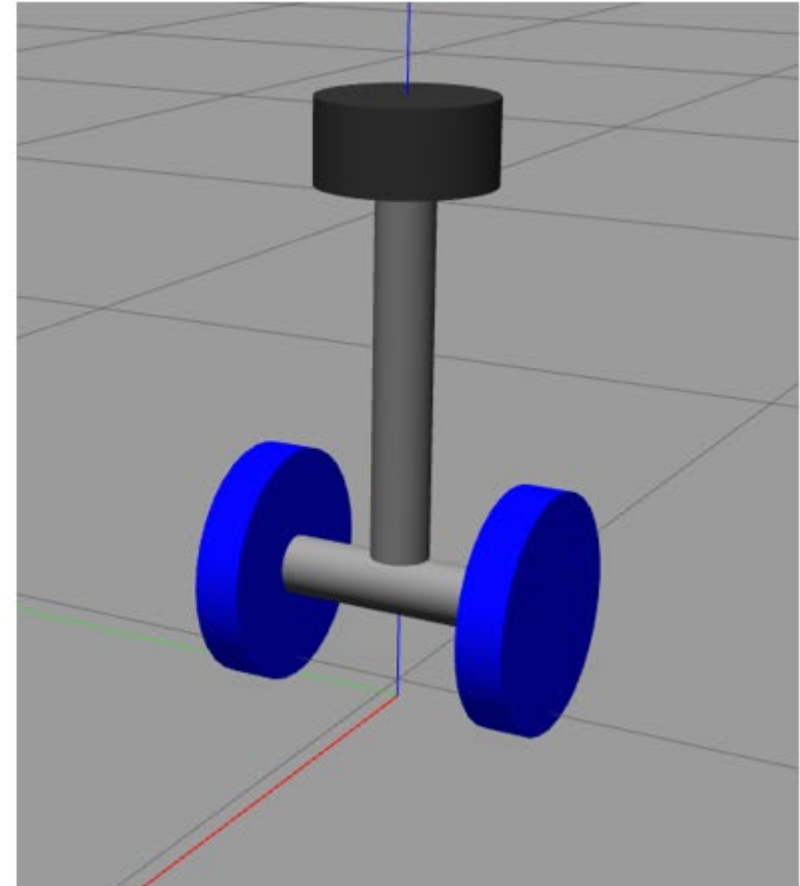
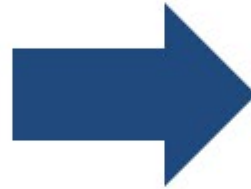


Courtesy of É.S.I.B

WHEELED MOBILE ROBOTS

Serial Robotics Manipulators
Wheeled Mobile Robots
Autonomous Off-Road Vehicles

Ackermann-based steering
Articulated-based steering
Differential Drive robot
Mobile wheeled Pendulum



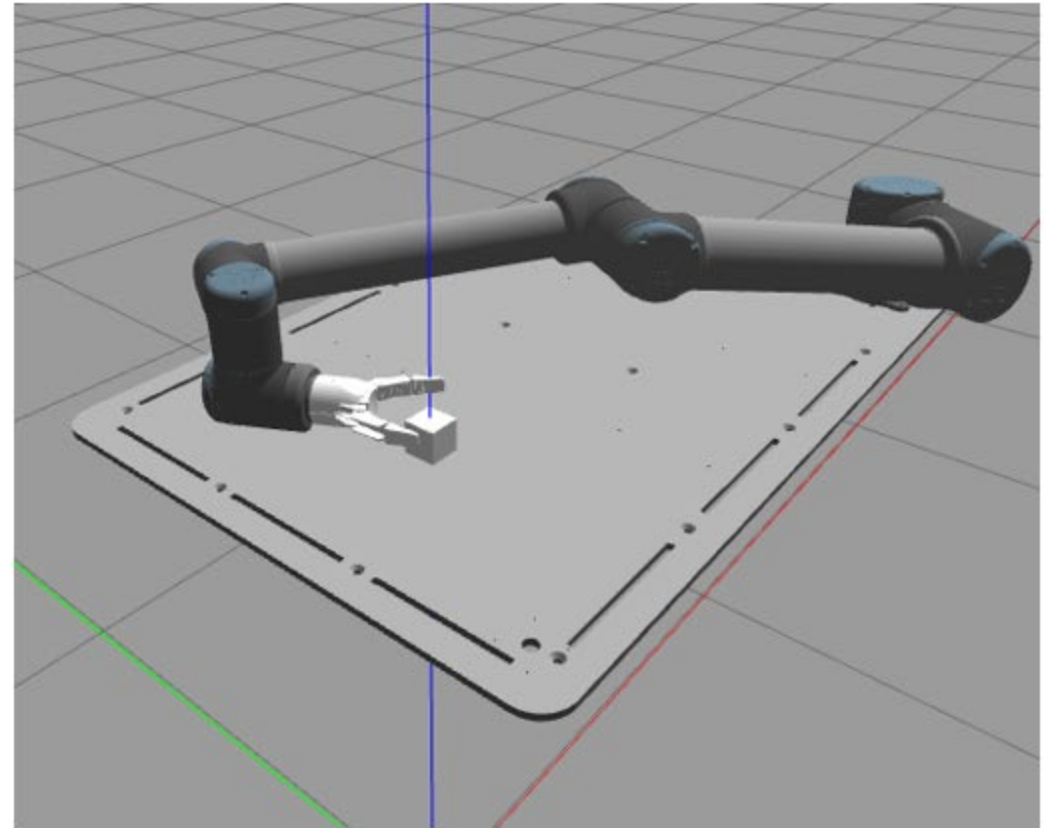
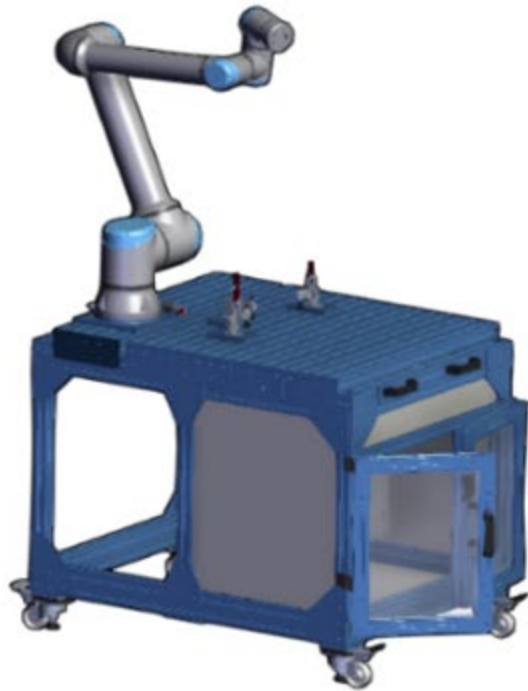
Courtesy of É.T.S

| Topic | Suggested Lab Sessions |
|----------------------------|---|
| DDR Platform & UR10e | Navigation and control of the platform in a warehouse |
| | PPO for UR10e with grasping |
| Tractor & Mower arm | Navigation and control of the tractor |
| | Force-based control of the mower arm |
| Articulated Wheeled Loader | Navigation and control of the tractor |
| | Loading and unloading of the arm |

AUTONOMOUS OFF-ROAD VEHICLES

Serial Robotics Manipulators
Wheeled Mobile Robots
Autonomous Off-Road Vehicles

DDR Platform & UR10e
Tractor & Mower Arm
Articulated Wheeled Loader



Courtesy of UR10e

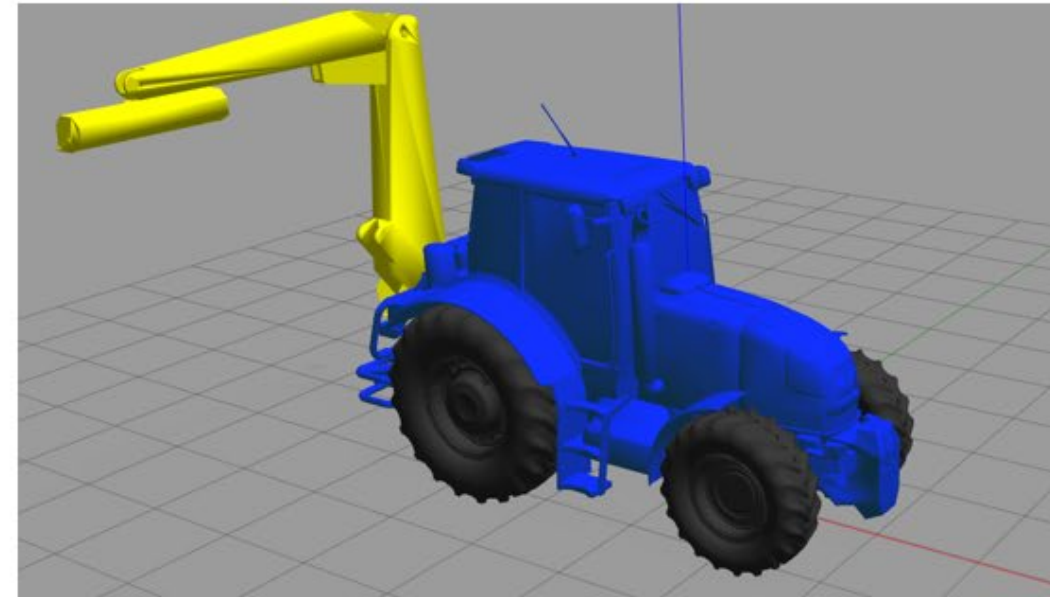
AUTONOMOUS OFF-ROAD VEHICLES

Serial Robotics Manipulators
Wheeled Mobile Robots
Autonomous Off-Road Vehicles

DDR Platform & UR10e
Tractor & Mower Arm
Differential Drive robot



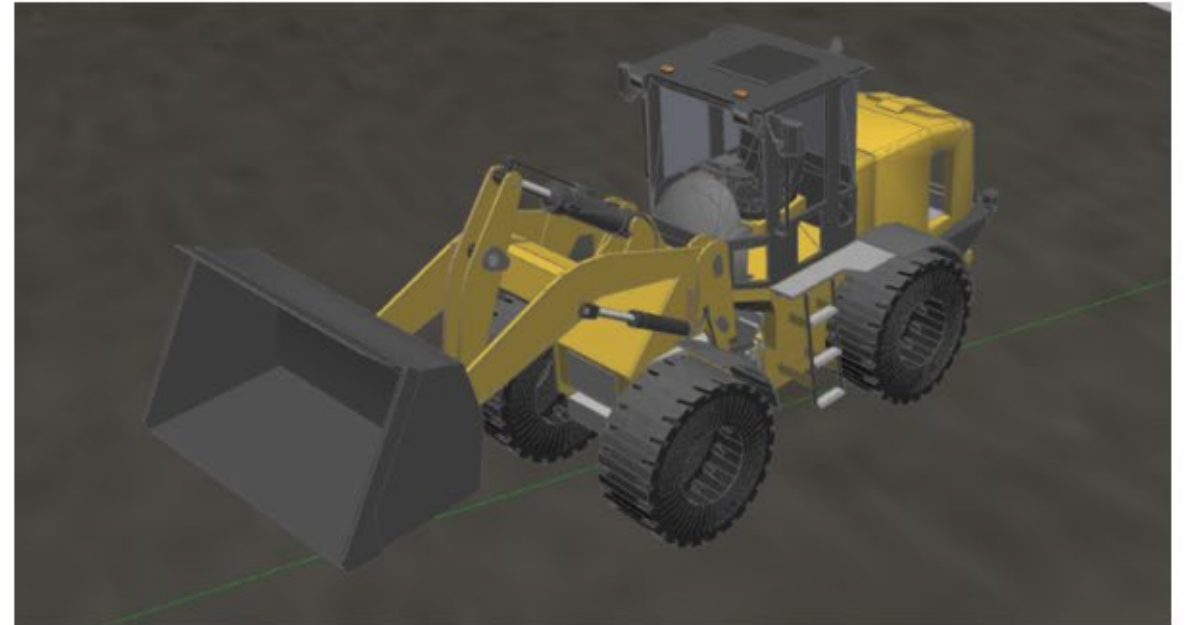
Courtesy of CNH Tractor



AUTONOMOUS OFF-ROAD VEHICLES

Serial Robotics Manipulators
Wheeled Mobile Robots
Autonomous Off-Road Vehicles

DDR Platform & UR10e
Tractor & Mower Arm
Articulated Wheeled Loader



Courtesy of VOLVO